

# AIR-FLOW MASTER PIEZON®

→ COMPLETE PROPHYLAXIS

**NEW**  
FROM THE INVENTOR  
OF THE ORIGINAL  
METHODS



**EMS**  
ELECTRO MEDICAL SYSTEMS

# ALL PROPHYLAXIS → ALL ORIGINAL

## PIEZON® METHOD

### 1 ORIGINAL PIEZON® HANDPIECE WITH LED

- > Circular light emission for maximum visibility
- > Lightweight and ergonomic
- > Sterilizable up to 135° C

### 2 PIEZON® NO PAIN TECHNOLOGY

- > Optimum instrument movements
- > Intelligent feedback control
- > Precise treatment results
- > Utmost patient comfort

### 3 EMS SWISS INSTRUMENTS™

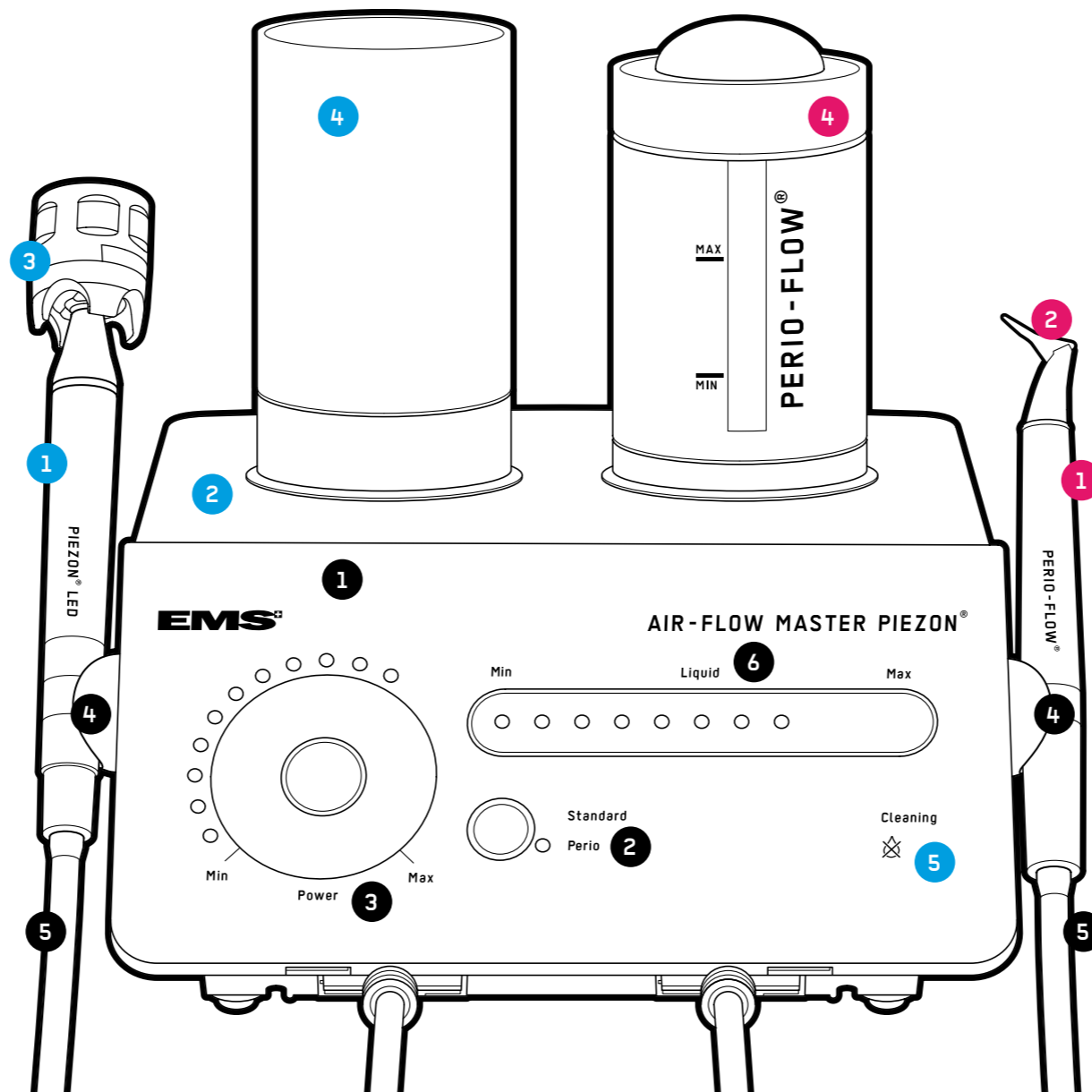
- > Each with CombiTorque® for steady handling
- > Broad scope of application

### 4 LIQUID CONTAINER

- > Volume 350 ml or 500 ml
- > Easy to refill

### 5 DRY WORK CONTROL LED

- > Illuminates when used without liquid



### 1 TOUCH PANEL

- > Fast and precise settings
- > Easy to clean, hygienic

### 2 WORKING MODES "STANDARD" AND "PERIO"

- > Piezon® and AIR-FLOW® Methods – easy switching between the working modes (manual)
- > AIR-FLOW® Perio Method – switches automatically to Perio when using the powder chamber Perio

### 3 POWER

- > LED settings in 17 increments
- > Easy to set as clinically required

### CLEANING MODE "PURGE"

- > Button on the side of the unit
- > Cleans all hoses individually (AIR-FLOW® and/or Piezon®)

### 4 HANDPIECE HOLDER

- > Magnetic, removable

### 5 HOSE

- > Removable from unit and handpiece

### 6 LIQUID

- > Easy control of flow amount

## AIR-FLOW® METHOD

### TWO HANDPIECES

- > Sub- and supragingival use
- > Free-flow technology
- > Sterilizable up to 135° C

### 1 PERIO-FLOW® HANDPIECE

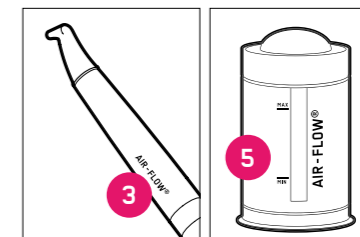
- > Subgingival use, down to deep periodontal pockets

### 2 PERIO-FLOW® NOZZLE

- > Single-use nozzle, easy to install
- > 3 nozzle outlets for air-powder mixture, horizontal
- > 1 nozzle outlet for water, vertical

### 3 AIR-FLOW® HANDPIECE

- > Supragingival use, also in subgingival border area
- > Standard 120° angle, optional 90° angle



### TWO POWDER CHAMBERS

- > Large capacity for many treatments
- > See-through and illuminated to visualize refill
- > Uniform powder flow, no clogging
- > Easy to remove, clean and refill

### 4 CHAMBER FOR AIR-FLOW® POWDER PERIO

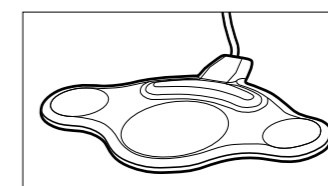
- > 45 g capacity for AIR-FLOW® Powder PERIO

### 5 CHAMBER FOR AIR-FLOW® POWDER CLASSIC AND AIR-FLOW® POWDER SOFT

- > 100 g capacity for AIR-FLOW® Powder CLASSIC
- > 65 g capacity for AIR-FLOW® Powder SOFT

### FOOT CONTROL

- > 4 functions for both methods
- > Includes power boost





# ORIGINAL AIR-FLOW® AND PIEZON® METHODS NOW GO HAND IN HAND → THE UNIQUE PROPHYLAXIS TEAM FOR PROPHYLAXIS PROS



## ORIGINAL AIR-FLOW® METHOD

- > Effective air polishing; reliable, fast and efficient for the practice – stress-free and comfortable for the patient (no curettes – no noise!)
- > Gentle application of biokinetic energy – no damage to the epithelium or connective tissue, no scratching of the tooth surface



## ORIGINAL AIR-FLOW® PERIO METHOD

- > Effective removal of biofilm down to the deepest periodontal pockets, sustained reduction in bacteria – prevents tooth loss (periodontitis!) or loss of implants (periimplantitis!)
- > Uniform turbulence of air-powder mixture and of rinse water due to patented PERIO-FLOW® nozzle – prevents soft-tissue emphysema



## ORIGINAL PIEZON® METHOD

- > Uniquely smooth tooth surfaces – linear oscillating action aligned with the tooth surface and delivered by Original EMS Swiss Instruments<sup>PM</sup>
- > Intelligent Piezon® No Pain technology – maximum protection of the gums, virtually painless treatment, utmost patient comfort



Ask for a copy of the brochures AIR-FLOW® KILLS BIOFILM and PIEZON® NO PAIN and find out all there is to know about prophylaxis with the Original AIR-FLOW®, AIR-FLOW® Perio and Piezon® Methods. Exciting and informative, based on the latest scientific evidence

# EMS-SWISSQUALITY.COM

For more information contact [welcome@ems-ch.com](mailto:welcome@ems-ch.com)