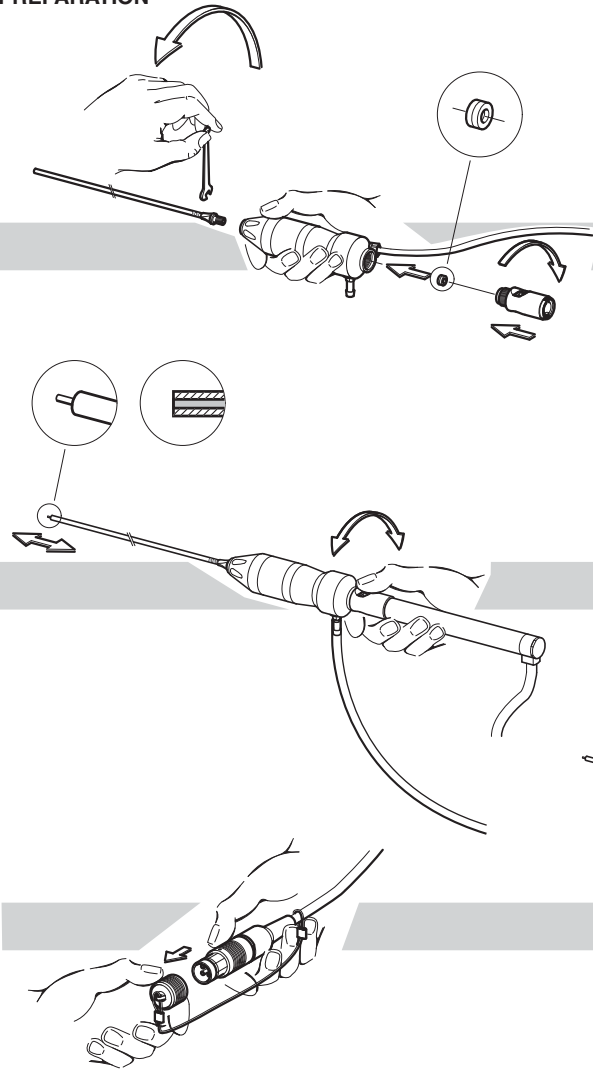
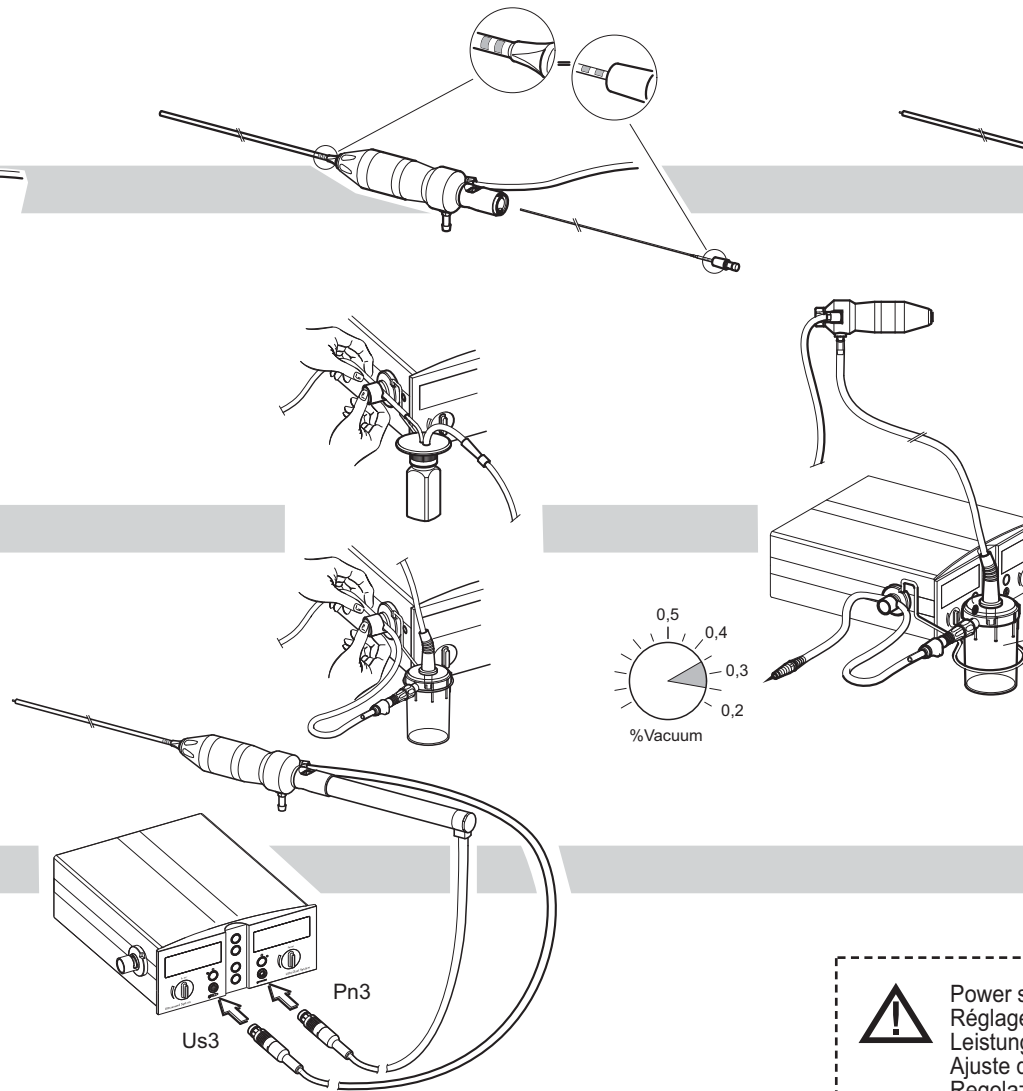


# Swiss LithoClast® Master

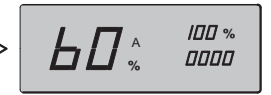
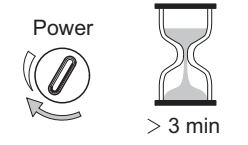
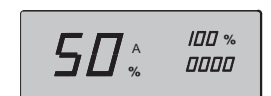
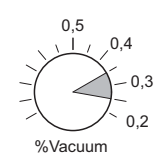
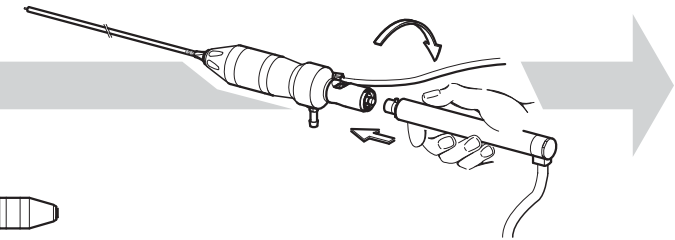
PREPARATION  
PRÉPARATION



VORBEREITUNG  
PREPARACIÓN



PREPARAZIONE  
FÖRBEREDELSE

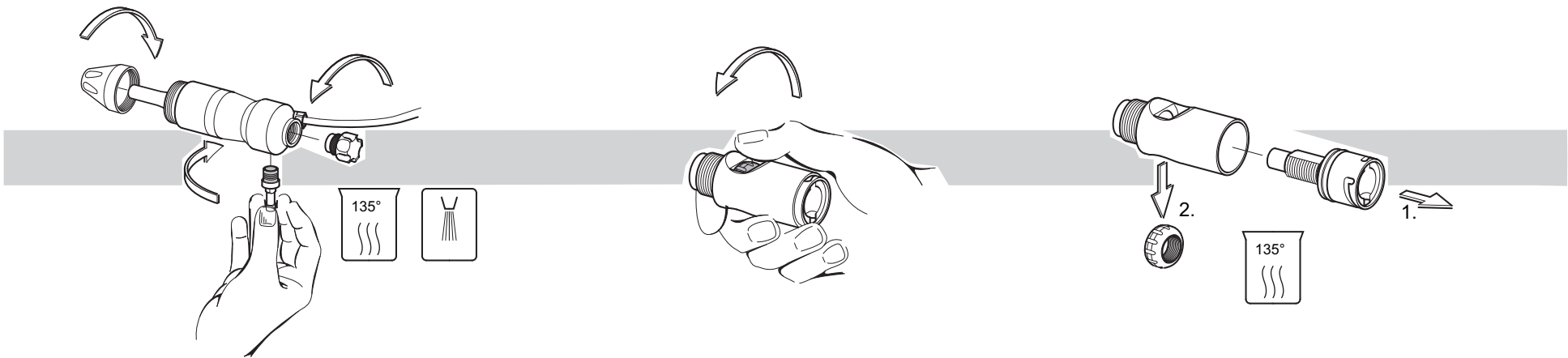
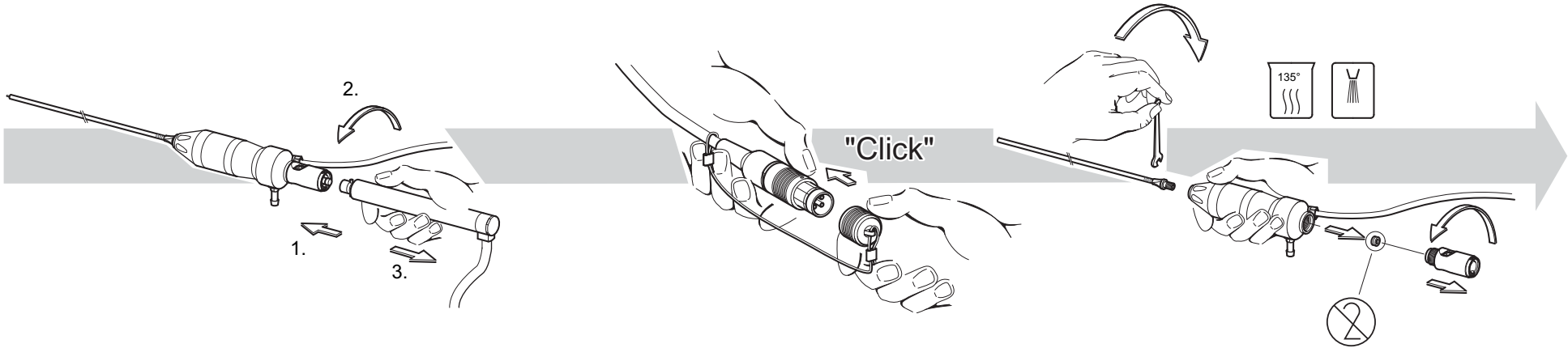


**!** Power setting for software version 2.31 only  
 Réglage de puissance pour software version 2.31 uniquement  
 Leistungseinstellung für Software 2.31  
 Ajuste de potencia para software versión 2.31 solamente  
 Regolazione della potenza valida solo per software versione 2.31  
 Effektinställning endast för programvarver. 2.31

STERILIZATION  
STERILISATION

STERILISATION  
ESTERILIZACIÓN

STERILIZZAZIONE  
STERILISERING



Caution! Read the operating instructions  
Attention! Consulter le mode d'emploi  
Achtung! Bitte Bedienungsanleitung lesen



Attenzione! Vedi istruzioni per l'uso  
¡Precaución! Ver instrucciones de empleo  
Akta! Läs bruksanvisningen